

RELEASE NO.	DATE
NP-632	4-20-49
NP-678	6-6-49

**STEP 1:** ATTACH BACK COVER PLATE 02-472-46 TO BOTTOM SHELF 02-471-21 USING (2) LS244-10B NO.8 TR.HD.SLOTTED TAPPING SCREWS. BOLT BOTTOM SHELF TO 02-201-81 WALL SECTION USING LS4-10B HEX HEAD BOLT. SEE FIG. 1.

**STEP 2:** ATTACH TOP SHELF 02-471-82 TO TOP WALL SECTION SPACER 02-201-81 WITH LS4-10B HEX HD. BOLT. ATTACH 02-472-46 BACK COVER PLATE TO TOP SHELF USING NO.8 TR.HD. SLOTTED TAPPING SCREWS, LS244-10B

**STEP 3:** ATTACH (6) 02-472-47 VERTICAL ANGLES, (3) ON RIGHT SIDE OF CABINET & (3) ON LEFT SIDE OF CABINET, LINKING TOP & BOTTOM SHELVES. USE LS68-5B MACHINE SCREWS AND LS407-8M LOW CROWN ACORN NUTS AND LS433-8B WASHERS. SEE FIGS. 1 AND 2.

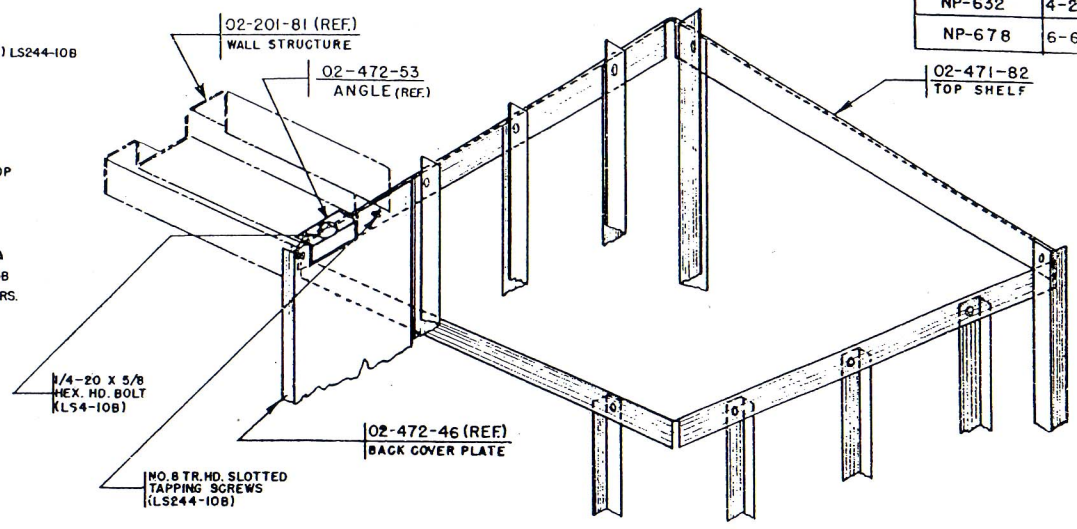


FIG. 2

**STEP 4:** ATTACH CENTER SHELF 02-472-42 AS SHOWN IN FIG. 3 DWG. EM-02-Q-II.II.

**STEP 5:** INSTALL (2) VERTICAL ANGLES 02-472-358 & 02-472-47, ONE AT REAR OF CABINET AND ONE AT RIGHT FRONT CORNER, AS SHOWN. INSTALL 02-472-48 VERTICAL ANGLE AT FRONT LEFT CORNER OF CABINET. USE LS68-5B MACHINE SCREWS AND LS433 8B LOCKWASHERS AND LS407 8M LOW CROWN ACORN NUTS. FIG. 1.

**STEP 6:** LEVEL & PLUMB BROOM CABINET STRUCTURE. SEE DETAIL "A" DWG.EM-02-Q-II.II. DRILL HOLE IN CONCRETE FLOOR AT RIGHT FRONT CABINET CORNER AND INSTALL EXPANSION SHIELD 02-202-131 & SHIMS 02-202-107 AS NECESSARY. SEE DETAIL "B" DWG.EM-02-Q-II.II.

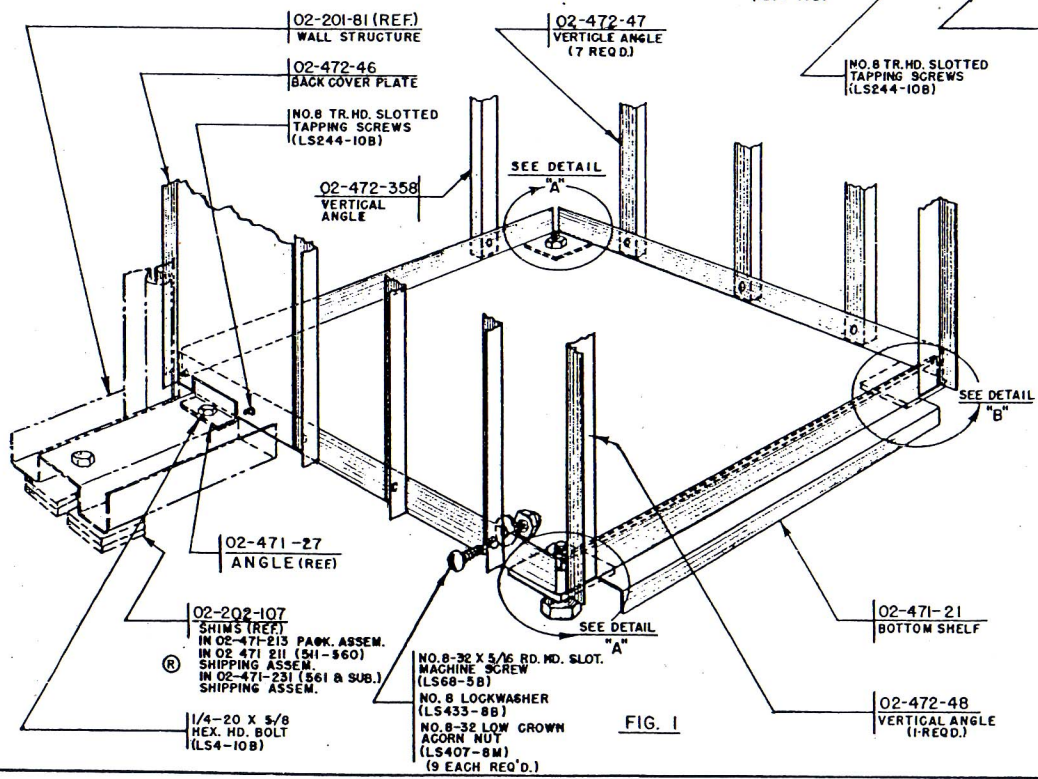


FIG. 1

**Lustron**  
CORPORATION

ERECTION		MANUAL
TITLE BROOM CABINET-ASSEMBLY		
PREPARED BY W.C.G.	DATE 4-20-49	EFF. 511 & SUB.
REVISED 6-6-49	R.L.S.	DRAWING NUMBER EM-02-Q-II.I