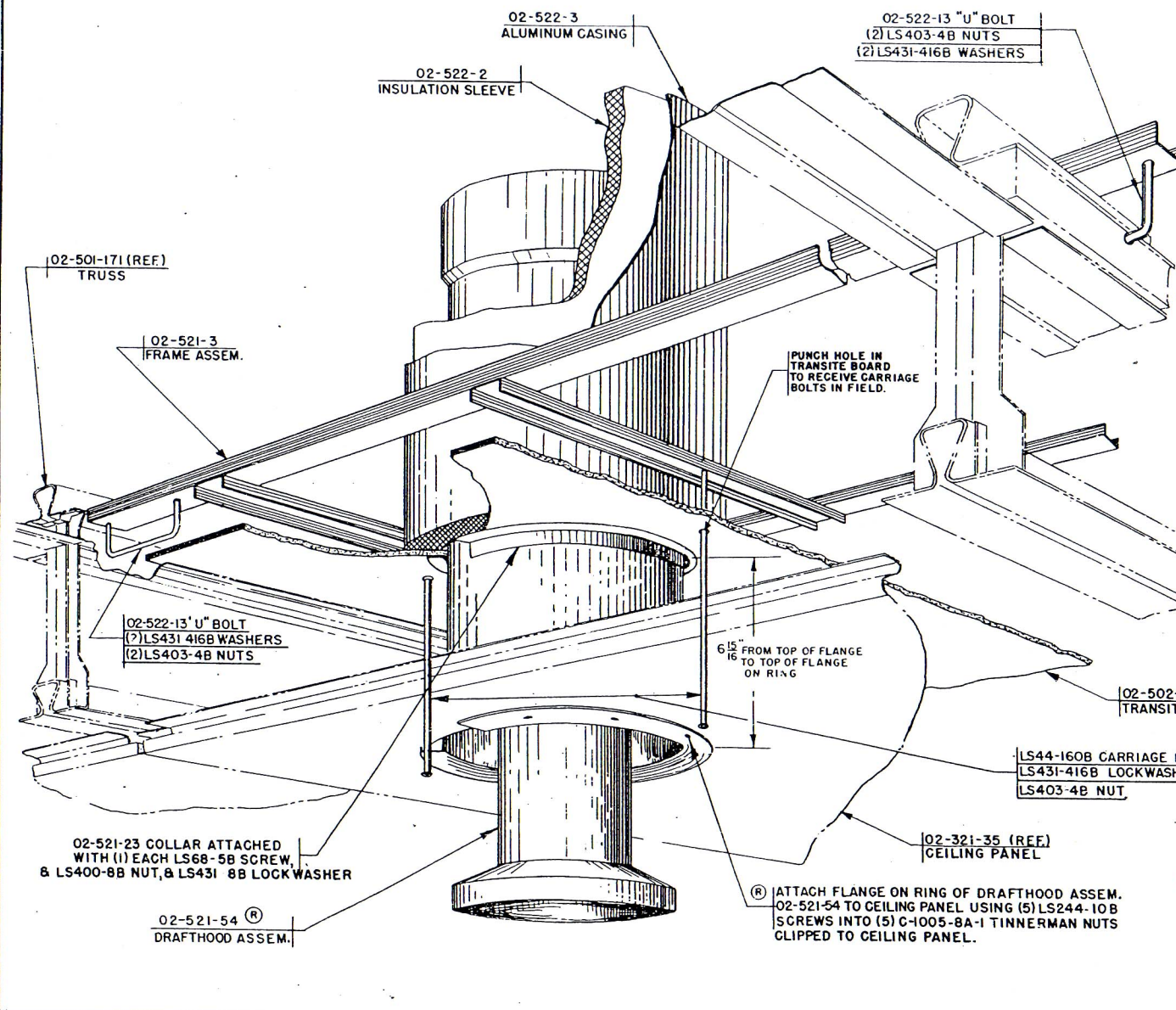


RELEASE NO.	DATE	RELEASE NO.	DATE
NP - 697	6-21-49	NP - 636	4-20-49
		NP - 660	5-3-49



BEFORE INSTALLATION OF CEILING PANELS AND PLENUM, PLACE 02-521-3 FRAME ASSEM. ON TOP RUNNER AND LOCATE APPROX. AFTER TRANSITE AND CEILING PANELS ARE INSTALLED IN THIS AREA, THEN LOCATE FRAME WITH HOLE IN CEILING PANEL. BY ATTACHING LS44-160B CARRIAGE BOLT WITH LS431-416B LOCKWASHER & LS403-4B NUT THRU CEILING PANEL 02-321-35 TO FRAME 02-521-3 IN TWO PLACES. TIGHTEN TO LEVEL CEILING PANEL. THEN SECURE FRAME 02-521-3 TO TOP RUNNERS USING (2) EACH 02-522-13 "U" BOLTS (4) LS431-416B LOCKWASHERS & (4) LS403-4B NUTS. ATTACH 02-521-23 COLLAR TO 02-521-54 DRAFTHOOD USING (1) LS68-5B SCREW, LS400-8B NUT & LS431-8B LOCKWASHER. INSERT DRAFTHOOD WITH COLLAR ATTACHED THRU HOLE IN CEILING PANEL AND HOLD DRAFTHOOD WELD ASSEM. WITH RING TIGHT AGAINST CEILING PANEL. THEN ATTACH RING ON DRAFTHOOD ASSEM. 02-521-54 TO CEILING PANEL 02-321-35 WITH (5) LS244-10B SCREWS INTO (5) C-1005-8A-1 TINNEMAN NUTS PREVIOUSLY CLIPPED OVER HOLES IN CEILING PANEL. INSERT FROM HOLE IN ROOF PANEL THE NEXT TWO 02-522-1 FLUE PIPES INTO DRAFTHOOD ASSEM. THEN INSTALL FROM THE TOP AROUND THE FLUE THE 02-522-2 INSULATION SLEEVE AND FIT 02-522-3 ALUMINUM CASING AROUND INSULATION. NEXT INSTALL THIRD PIECE OF FLUE AND INSTALL LAST PIECE OF INSULATION. THEN FIT SECOND PIECE OF 02-522-3 CASING TO COMPLETE FLUE INSTALLATION.

02-501-171 (REF.) TRUSS

02-521-3 FRAME ASSEM.

02-522-3 ALUMINUM CASING

02-522-2 INSULATION SLEEVE

02-522-13 "U" BOLT  
(2) LS403-4B NUTS  
(2) LS431-416B WASHERS

PUNCH HOLE IN TRANSITE BOARD TO RECEIVE CARRIAGE BOLTS IN FIELD.

02-522-13 "U" BOLT  
(2) LS431-416B WASHERS  
(2) LS403-4B NUTS

6 1/2" FROM TOP OF FLANGE TO TOP OF FLANGE ON RING

02-501-173 TRUSS (REF.)

02-502-226 (REF.) TRANSITE BOARD

LS44-160B CARRIAGE BOLTS  
LS431-416B LOCKWASHER  
LS403-4B NUT

02-521-23 COLLAR ATTACHED WITH (1) EACH LS68-5B SCREW, & LS400-8B NUT, & LS431-8B LOCKWASHER

02-321-35 (REF.) CEILING PANEL

02-521-54 (R) DRAFTHOOD ASSEM.

(R) ATTACH FLANGE ON RING OF DRAFTHOOD ASSEM. 02-521-54 TO CEILING PANEL USING (5) LS244-10B SCREWS INTO (5) C-1005-8A-1 TINNEMAN NUTS CLIPPED TO CEILING PANEL.

**LUSTRON**  
CORPORATION

ERECTOR	MANUAL		
TITLE	INSTALLATION CHIMNEY FLUE WITH GAS INSTALLATION		
PREPARED BY	DATE	EFF.	31 & SUB.
G. E.	4-20-49		DRAWING NUMBER
REVISED	BY		
6-21-49	(R) W. C. G.	EM-02-N-91.1	