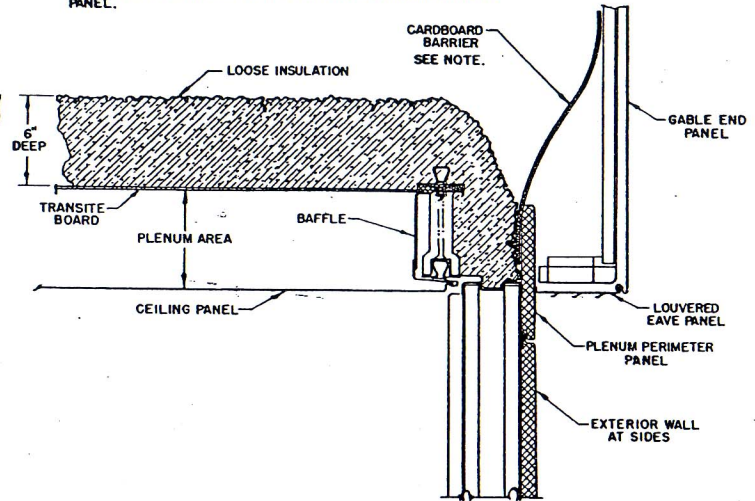



**SECTION THRU PLENUM  
AT FRONT OR REAR**

**NOTE:**  
INSTALL CARDBOARD BARRIER BEFORE LOOSE INSULATION IS BLOWN IN TO PREVENT ANY INSUL. FROM FALLING INTO AREA OF LOUVERED EAVE PANEL. REMOVE BARRIER WITH CAUTION AND PACK INSUL. DOWN TO SEE THAT IT WILL NOT SIFT DOWN ONTO EAVE PANEL.



**SECTION THRU PLENUM  
AT GABLE END  
RIGHT HAND SHOWN**

		ERECTION		MANUAL
		TITLE INSTALLATION OF LOOSE FILL INSULATION		
PREPARED BY G.E.	DATE 5-3-49	EFF.	31 & SUB	
		DRAWING NUMBER EM-02-F-20.11		