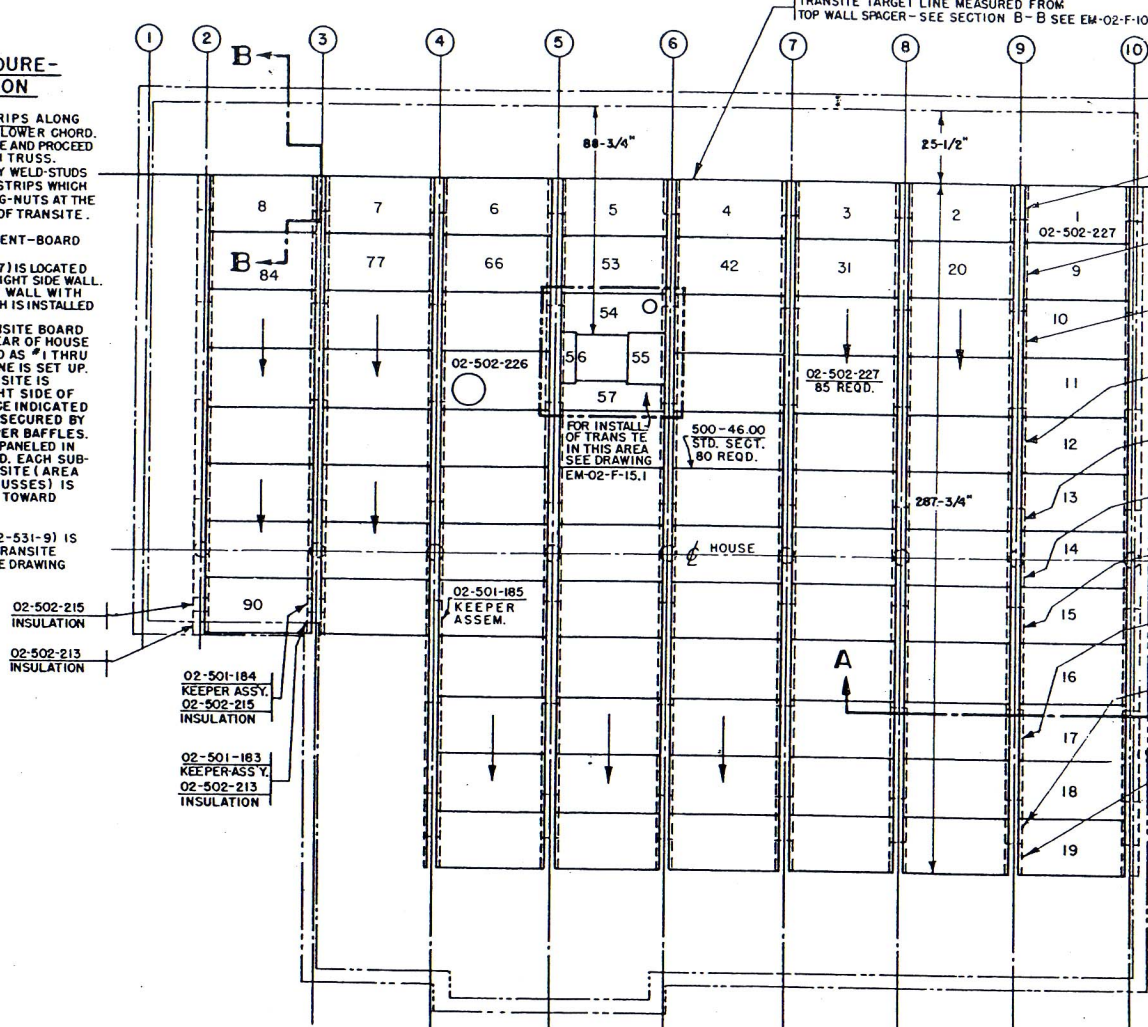


NP- 329	2-20-49
REL. NO.	
NP-361	2-24-49
NP-679	6-8-49

### ERECTION PROCEDURE- PLENUM INSULATION

- INSTALL FIRE-FOIL STRIPS ALONG LOWER FACE OF TRUSS LOWER CHORD. START AT REAR OF HOUSE AND PROCEED TOWARD FRONT ON EACH TRUSS. FIRE-FOIL IS SECURED BY WELD-STUDS ON TRUSS AND KEEPER STRIPS WHICH ARE SECURED WITH WING-NUTS AT THE TIME OF INSTALLATION OF TRANSITE.
- INSTALL TRANSITE (CEMENT-BOARD PANELS). FIRST PIECE (02-502-227) IS LOCATED FROM REAR WALL AND RIGHT SIDE WALL. IT IS SECURED AT RIGHT WALL WITH BAFFLE ASSEMBLY WHICH IS INSTALLED AT THIS TIME. THE FIRST ROW OF TRANSITE BOARD IS INSTALLED ALONG REAR OF HOUSE (IN SEQUENCE INDICATED AS #1 THRU #8) AFTER STARTING LINE IS SET UP. THE NEXT ROW OF TRANSITE IS INSTALLED ALONG RIGHT SIDE OF HOUSE (IN SEQUENCE INDICATED AS #9 THRU #19) AND SECURED BY INSTALLATION OF PROPER BAFFLES. THE REMAINING AREA IS PANELED IN SEQUENCE AS INDICATED. EACH SUBSEQUENT ROW OF TRANSITE (AREA BETWEEN ADJACENT TRUSSES) IS INSTALLED FROM REAR TOWARD FRONT OF HOUSE.
- SCUTTLE ASSEMBLY (02-531-9) IS INSTALLED AFTER #53 TRANSITE BOARD IS SECURED. SEE DRAWING EM-02-F-15.1.



- ON TRUSSES #3 THROUGH #9  
02-501-174 7 REOD. KEEPER ASSEM.
- ON TRUSSES #2 THROUGH #10  
02-502-213 9 REOD. INSULATION
- ON TRUSSES #3 THROUGH #9  
02-501-182 7 REOD. KEEPER ASSEM.
- ON TRUSSES #2 THROUGH #10  
02-502-64 9 REOD. INSULATION
- ON TRUSSES #3 THROUGH #9  
02-501-182 7 REOD. KEEPER ASSEM.
- ON TRUSSES #2 THROUGH #10  
02-502-64 9 REOD. INSULATION
- ON TRUSSES #3 THROUGH #9  
02-501-176 7 REOD. KEEPER ASSEM.
- ON TRUSSES #2 THROUGH #10  
02-502-216 9 REOD. INSULATION
- ON TRUSSES #2 THROUGH #10  
02-502-216 9 REOD. INSULATION
- ON TRUSSES #5 THROUGH #9  
02-501-182 5 REOD. KEEPER ASSEM.
- ON TRUSSES #4 THROUGH #10  
02-502-64 7 REOD. INSULATION
- ON TRUSSES #5 THROUGH #9  
02-501-182 5 REOD. KEEPER ASSEM.
- ON TRUSSES #4 THROUGH #10  
02-502-64 7 REOD. INSULATION
- ON TRUSSES #5 THROUGH #9  
02-501-180 5 REOD. KEEPER ASSEM.
- ON TRUSSES #4 THROUGH #10  
02-502-217 7 REOD. INSULATION
- ON TRUSSES #5 THROUGH #9  
02-501-174 5 REOD. KEEPER ASSEM.
- ON TRUSSES #4 THROUGH #10  
02-502-213 7 REOD. INSULATION

FOR SECTION "A-A" SEE EM-02-F-10.11  
FOR SECTION "B-B" SEE EM-02-F-10.12

NOTE:  
HANDLE TRANSITE WITH EXTREME CARE TO AVOID BREAKAGE.  
STORE FIRE-FOIL IN DRY PLACE.



ERECTION		MANUAL
TITLE PLENUM TRANSITE INSTALLATION		
PREPARED BY W. C. G.	DATE 2-14-49	EFF. 101 THRU 3000 (R)
DRAWING NUMBER EM-02-F-10.1		