

REVISED 1-2-2003

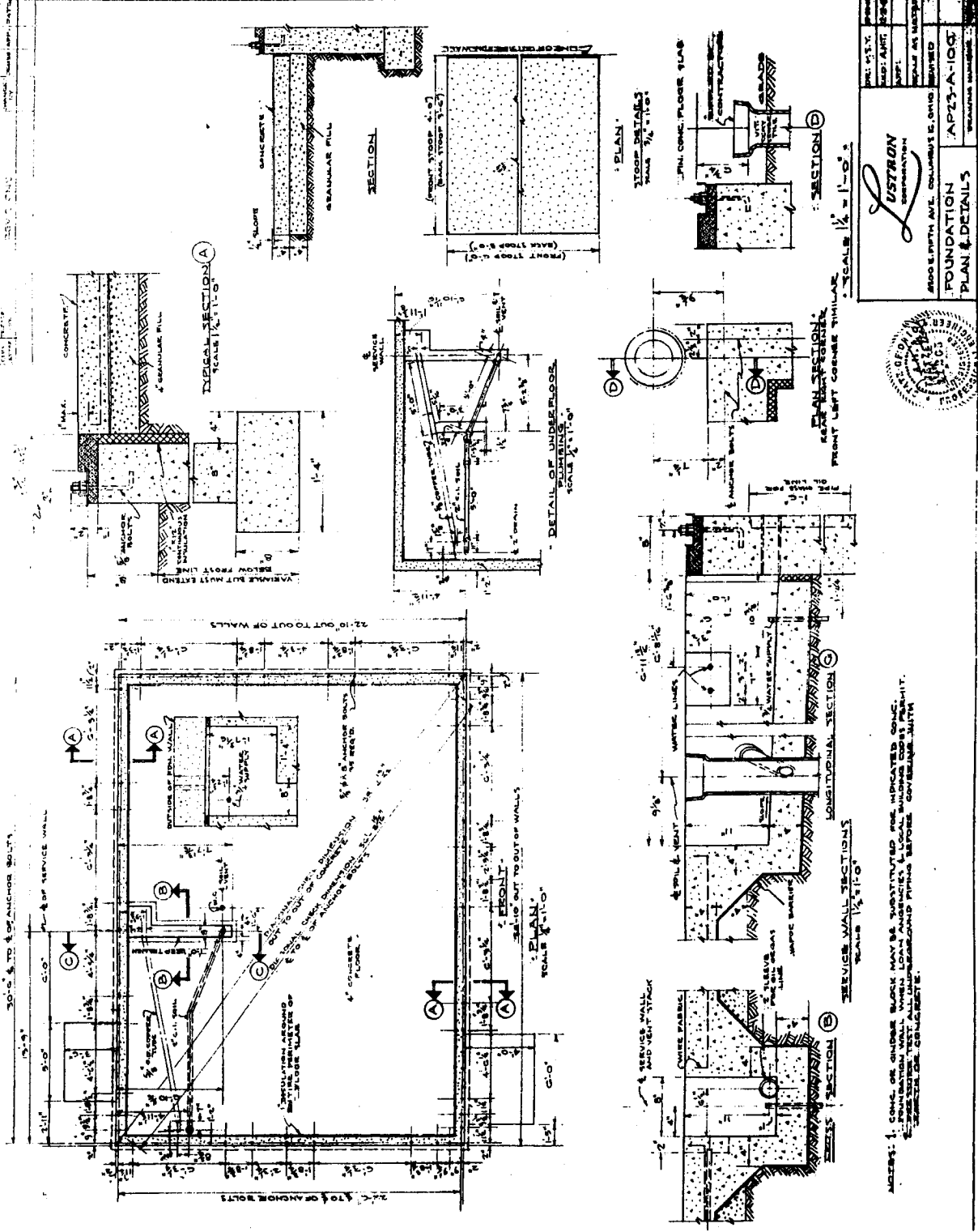



COLUMBUS,
OHIO

CORPORATION

ARCHITECTURAL PLANS
MODEL 023 HOME

DATE OF ISSUE



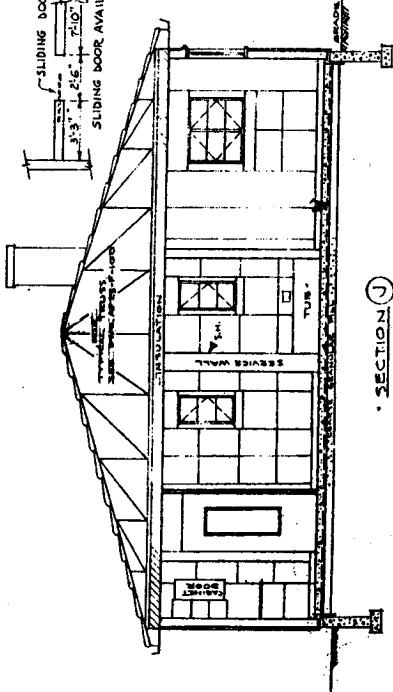
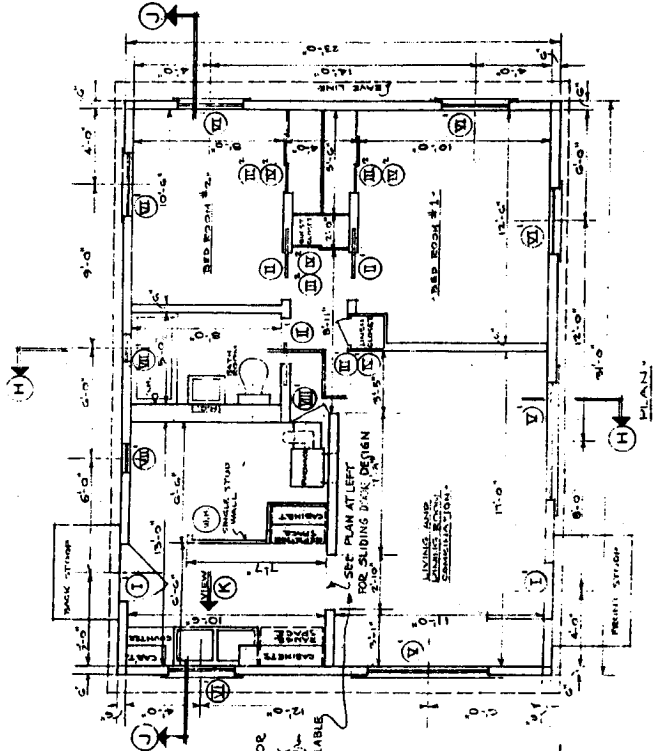
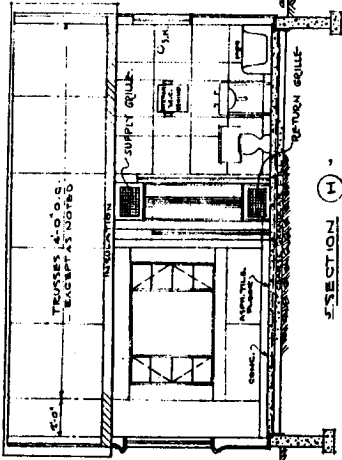
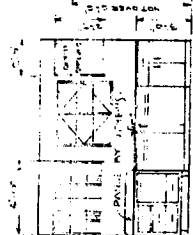
 <p>LUSTRON CORPORATION</p>	<p>800 E. 9TH AVE., COLUMBUS, OHIO</p> <p>AP23-A-100</p>
<p>FOUNDATION PLAN & DETAILS</p>	
<p>REV. 1-15-54</p> <p>REV. 4-11-54</p> <p>REV. 4-11-54</p> <p>REV. 4-11-54</p>	<p>DESIGNED BY</p> <p>DRAWN BY</p> <p>CHECKED BY</p> <p>APPROVED BY</p>



NOTES: 1. CONC. OR GROUND BLOCK MAY BE SUBSTITUTED FOR INDICATED CONC. FOUNDATION WALL WHEN LOCAL AGENCIES & LOCAL BUILDING CODES PERMIT.
 2. ALL PIPES AND FITTINGS TO BE INSTALLED BEFORE COVERING WITH SECTION OF CONCRETE.

ITEM NO.	DESCRIPTION	QUANTITY
1	2' 0" x 5' 2" FURNACE ACCESS DOOR.	1
2	1' 2" x 1' 1/2" BATHROOM & STORAGE W.C.	2
3	1' 2" x 1' 1/2" BATHROOM & STORAGE W.C.	2
4	2' 0" x 4' 0" LARGE WINDOWS	2
5	2' 0" x 4' 0" LARGE WINDOWS	2
6	1' 2" x 1' 1/2" BATHROOM & STORAGE W.C.	2
7	1' 2" x 1' 1/2" CLOSET DOORS - UPPER.	7
8	1' 2" x 1' 1/2" CLOSET DOORS - LOWER.	7
9	7' 6" x 9' 6" INTERIOR COMMON DOORS	9
10	7' 6" x 9' 6" EXTERIOR PEAK DOORS	10

QUANTITY INDICATED IN CIRCLE INDICATES QUANTITY
 IN EACH CONTINUING LOCATION



USTRON
CORPORATION

4500 E. FIFTH AVE., COLUMBUS, OHIO

FLOOR PLAN & AP23-B-100

SECTIONS

DATE: 11/10/50
 DRAWN BY: [unclear]
 CHECKED BY: [unclear]
 REVISIONS: [unclear]

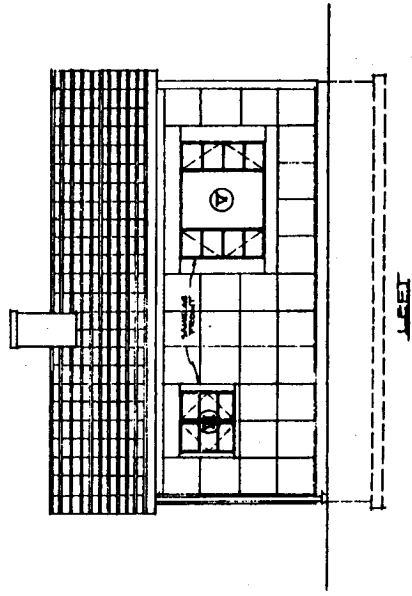
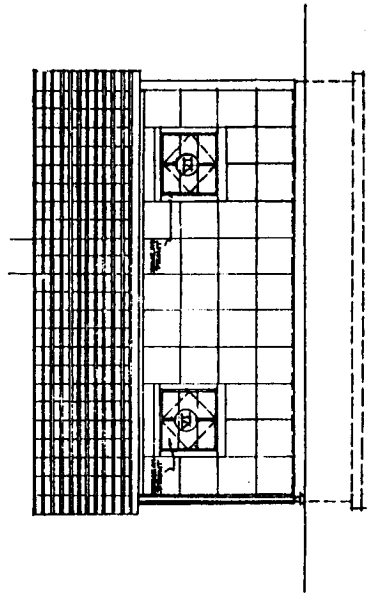
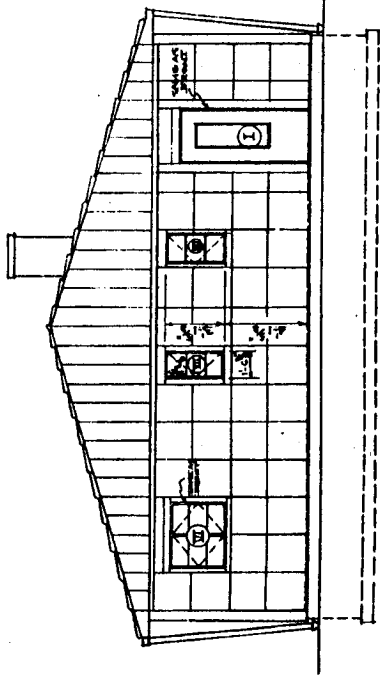
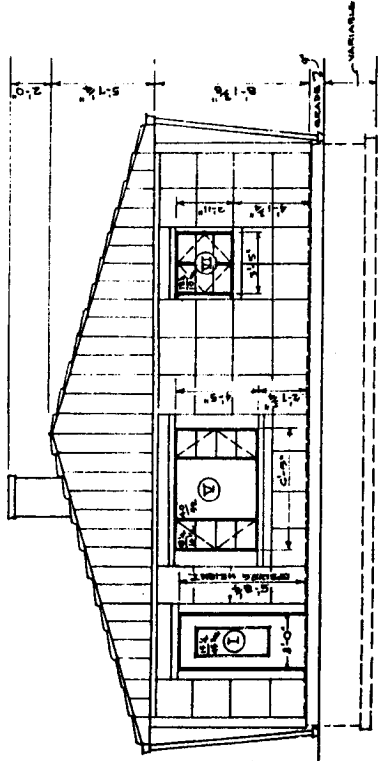


NOTE: ALL INTERIOR WALLS ARE NON-BEARING.

REVISED

DATE

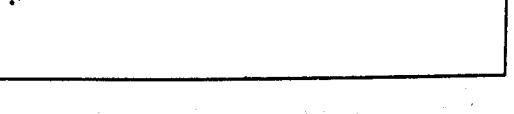
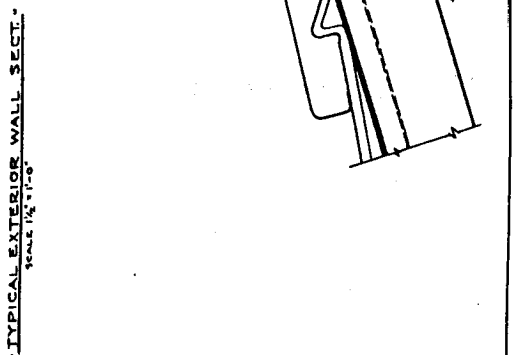
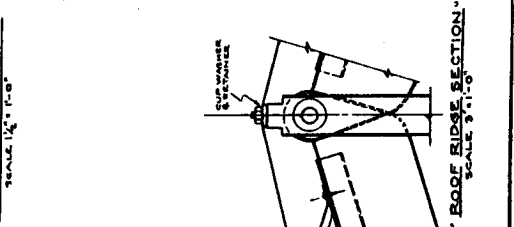
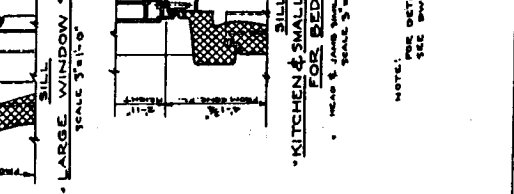
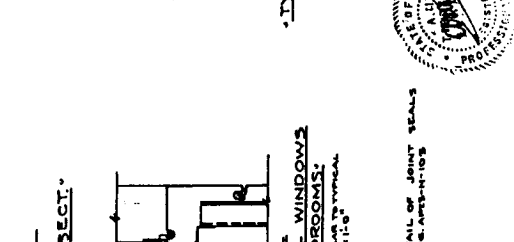
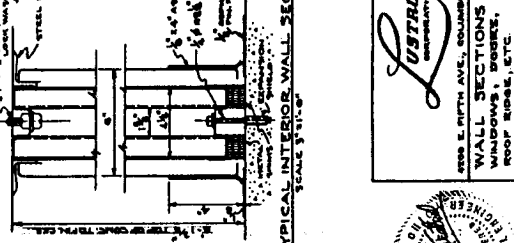
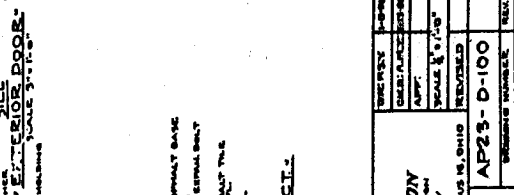
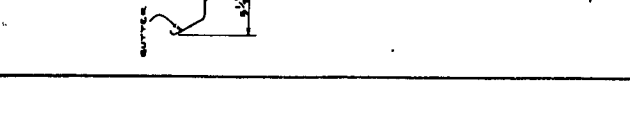
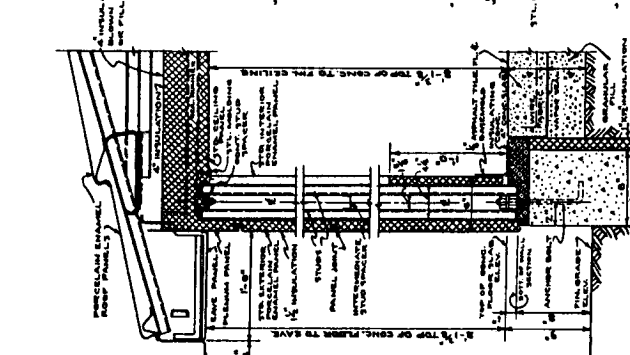
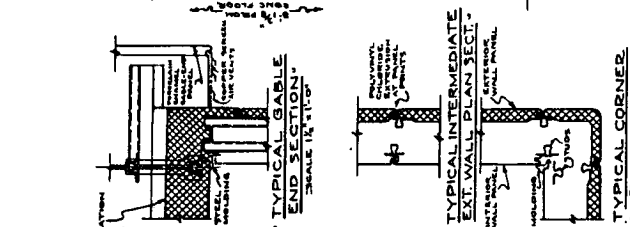
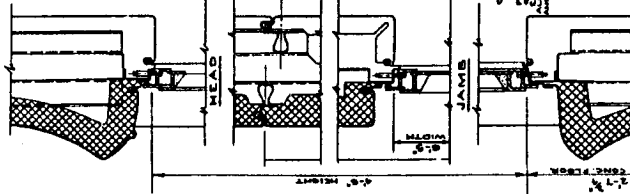
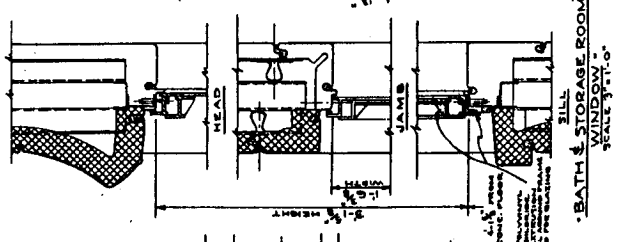
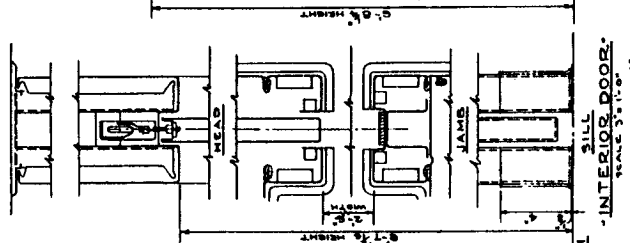
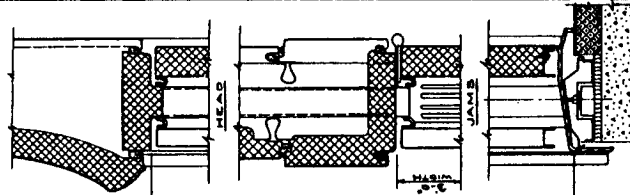
BY



L
 LUTHER
 ARCHITECT

EXHIBITS MAP, COLLIMATED SQUARE
 ELEVATIONS -
 EXTERIORS
 AP23-C-108

DATE	BY	REVISIONS
10/20		



USTRON
CORPORATION

2000 E. FIFTH AVE., COLUMBUS 18, OHIO
WINDOWS, DOORS, ROOF RIDGES, ETC.

DESIGNED BY	SCALE 3/4" = 1'-0"
CHECKED BY	REVIEWED
DATE	10/20

AP23-D-100



NOTE:
SEE DETAIL OF JOINT SEALS
SEC. DWG. AP23-N-102

